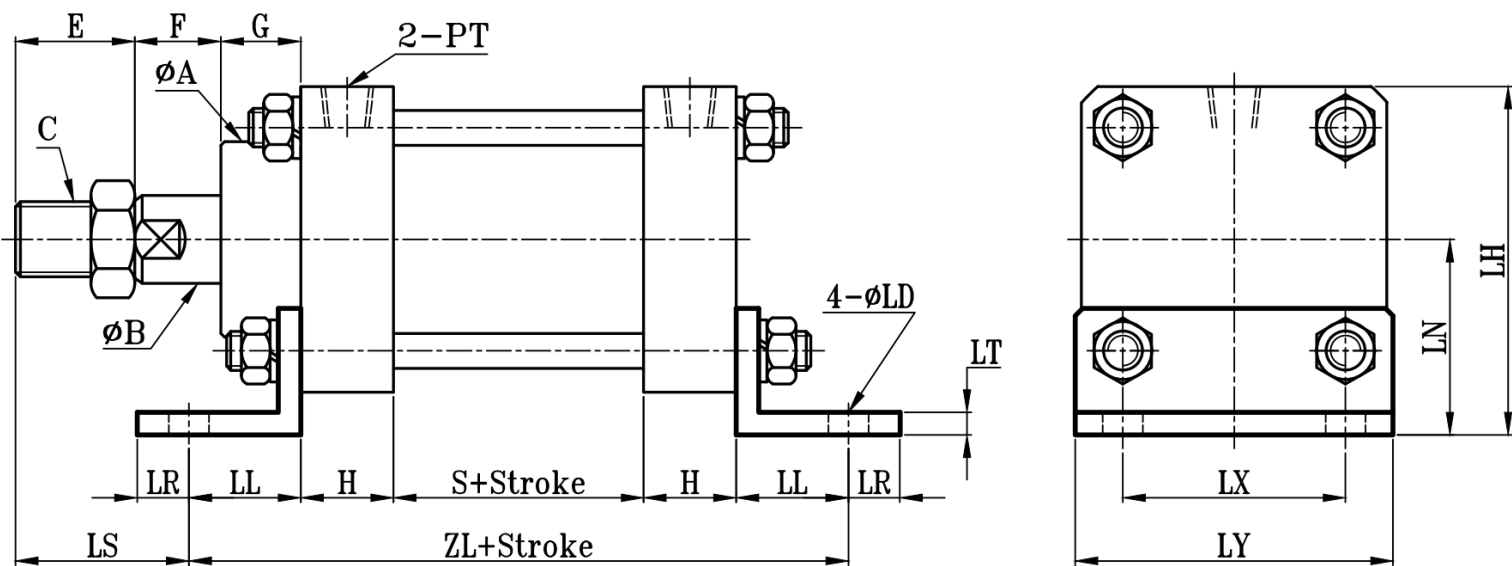
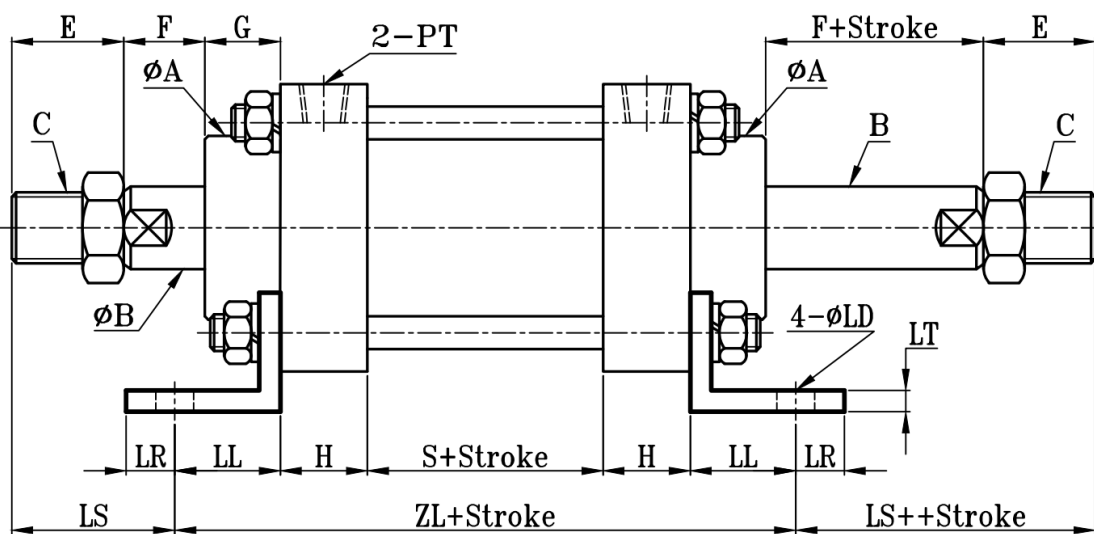


MOB:MOB+LB(架) TYPE

方型轻油压缸LB架尺寸图 7Mpa Hydraulic Cylinders LB Dimensional Features



MOD:MOD+LB(架) TYPE



缸径 BORE	MOB-MOD											LB TYPE							
	ΦA	ΦB	C	E	F	G	H	PT	S	LS	ZL	ΦLD	LH	LN	LL	LR	LT	LX	LY
Φ16	21	10	M8xP1.25	20	11	15	20	1/8	45	25	127	7	46.5	29	21	9	4	23	38
Φ20	25	12	M10xP1.25	25	11	15	20	1/8	45	30	127	7	51.5	31.5	21	9	4	28	47
Φ25	25	14	M12xP1.25	25	11	15	20	1/8	45	30	127	7	51.5	31.5	21	9	4	28	47
Φ32	30	16	M14xP1.5	30	15	15	25	1/4	50	31	158	9	61.5	36.5	29	11	5	34	53
Φ40	40	20	M16xP1.5	30	15	20	25	3/8	50	36	158	9	73.5	43.5	29	11	5	45	65
Φ50	45	20	M16xP1.5	30	15	20	30	3/8	55	28	189	11	83	48	37	13	6	50	73
Φ63	55	25	M22xP1.5	35	20	25	30	3/8	55	43	189	11	97.5	55	37	13	6	60	88
Φ80	62	30	M26xP1.5	40	20	30	35	1/2	60	44	222	13	120.5	69	46	17	8	74	106
Φ100	75	35	M30xP1.5	40	20	30	35	1/2	75	44	237	15	139	77.5	46	17	8	89	125
Φ125	85	50	M40xP2.0	50	25	30	40	1/2	75	46	273	17	164.5	92	59	21	10	110	150
Φ150	105	60	M50xP2.0	60	30	30	50	3/4	85	61	303	20	203.5	112.5	59	21	10	138	189
Φ160	105	60	M50xP2.0	60	30	30	50	3/4	85	61	303	20	203.5	112.5	59	21	10	138	189
Φ180	130	80	M70xP2.0	80	30	35	50	3/4	95	70	345	24	248	136.5	75	25	12	180	240
Φ200	130	80	M70xP2.0	80	30	35	50	3/4	95	70	345	24	248	136.5	75	25	12	180	240